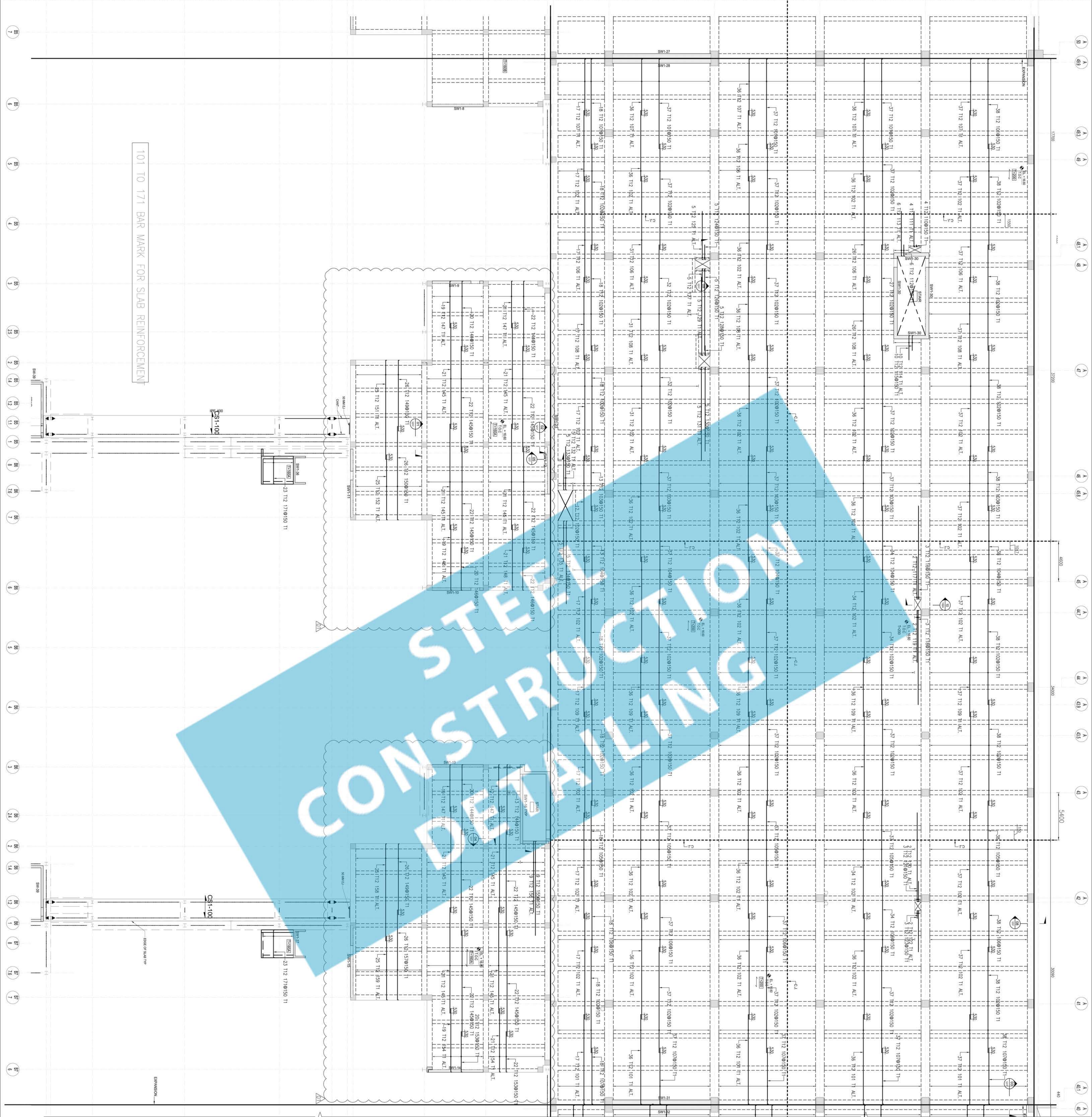


FOR CONTINUATION REFER AREA - AA12 SHOP DRAWINGS

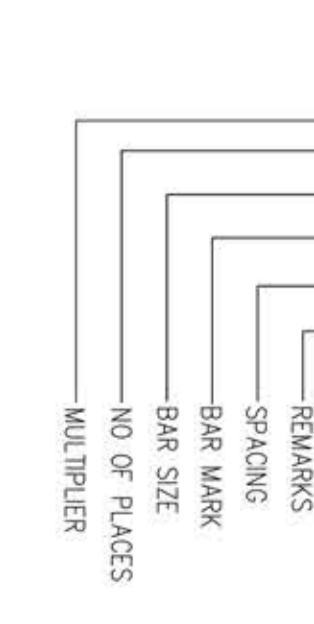
MATCH LINE A-A



FOR CONTINUATION REFER 433-A001-S-SH-10-1-1215

NOTES / LEGENDS

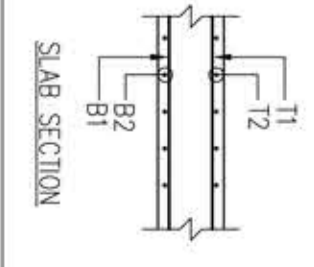
- ALL DIMENSIONS ARE IN MM UNLESS OTHERWISE NOTED.
- ALL LEVELS ARE IN M UNLESS OTHERWISE NOTED.
- CONCRETE GRADE IS AS SHOWN IN SECTIONS 30, 30a.
- COVER FOR STEEL = 40MM UNLESS NOTED.
- COVER FOR SLAB REINFORCEMENT = 25 mm
- LEAD FOR CALLOUT
- NO. OF PLACES



7. ABBREVIATION

- B - BOTTOM LAYER
- TOP - TOP LAYER
- TOP - TOP LAYER
- CONCRETE
- EXPANSION JOINT
- CONSTRUCTION JOINT
- THK - THICK
- ELEVATION
- THICKNESS
- ADD - ADDITIONAL

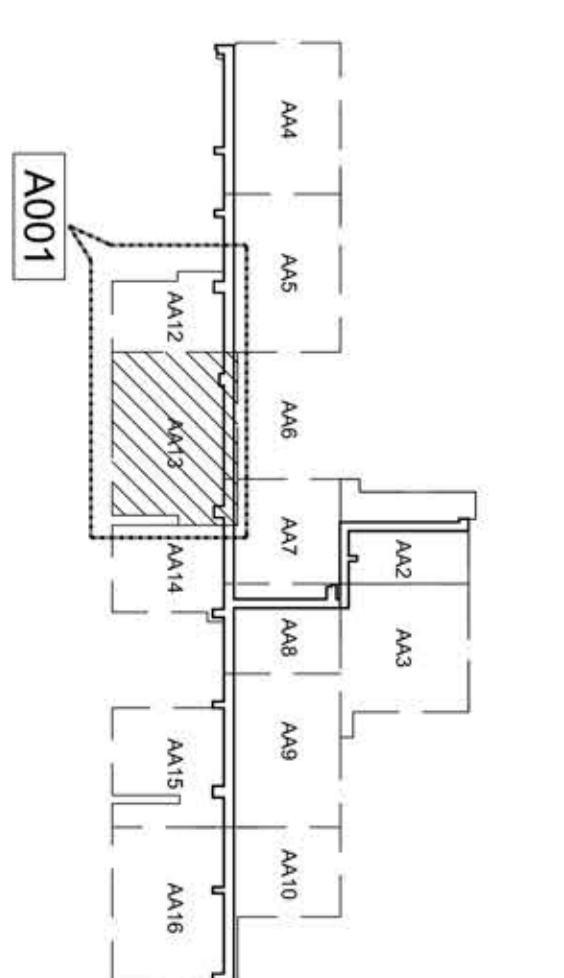
CLASS	UNIT	NO. OF PLACES
12	135	1760
13	155	1760
14	175	1760
15	195	1760
16	215	1760
17	235	1760
18	255	1760
19	275	1760
20	295	1760
21	315	1760
22	335	1760
23	355	1760
24	375	1760
25	395	1760
26	415	1760
27	435	1760
28	455	1760
29	475	1760
30	495	1760
31	515	1760
32	535	1760
33	555	1760
34	575	1760
35	595	1760
36	615	1760
37	635	1760
38	655	1760
39	675	1760
40	695	1760
41	715	1760
42	735	1760
43	755	1760
44	775	1760
45	795	1760
46	815	1760
47	835	1760
48	855	1760
49	875	1760
50	895	1760
51	915	1760
52	935	1760
53	955	1760
54	975	1760
55	995	1760



REFERENCE DRAWINGS

S/NO	DRAWING NUMBER	REV	TITLE
01	433-A001-S-D-50-X-1004	02	GENERAL NOTES
02	433-A001-S-D-50-X-1-013	05	LEVEL FORMING PLAN (AREA-AA13)
03	433-A001-S-D-50-X-4-032	03	TYPICAL CONCRETE DETAILS
04	433-A001-S-D-50-X-4-032Z	02	CONCRETE ELEVATED SLAB SCHEDULE

KEY PLAN



REVISION:

REV	DESCRIPTION	PREPARED	CHECKED	DATE
01	ISSUED FOR APPROVAL	HP	HP	05/04/2014

DRAWING BY: DESIGNED BY: MS
CHECKED BY: SB
APPROVED BY: DATE

APPROVED AS SUBMITTED
APPROVED WITH NO CHANGES
DISAPPROVED RESUBMIT

PROJECT NAME:
AIRCRAFT MAINTENANCE HANGARS

CLIENT:

ENGINEER:
CHAFARI

CONTRACTOR:
CHAFARI

PHASE & DISCIPLINE:
**SHOP DRAWING
STRUCTURAL**

DRAWING TITLE:
**NARROW BODY HEAVY MAINTENANCE HANGARS,
LEVEL-T SLAB REINFORCEMENT DETAILS
TOP B/LAYER AREA-AA13
SHEET 2 OF 7**

PROJECT NUMBER	DRAWING NUMBER	REV
433-A001-S-SH-10-1-1212		01